



Quick Installation Guide for USB- Interface Models (Windows XP, Windows 7)

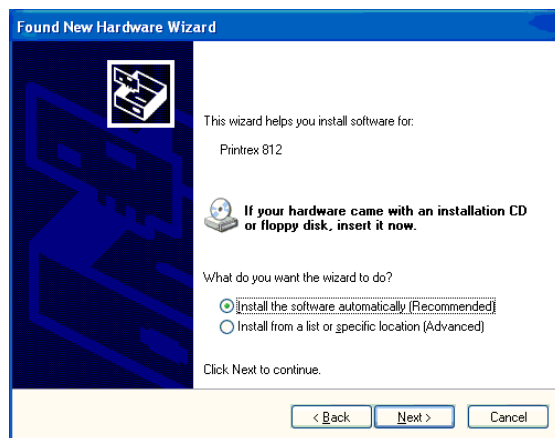
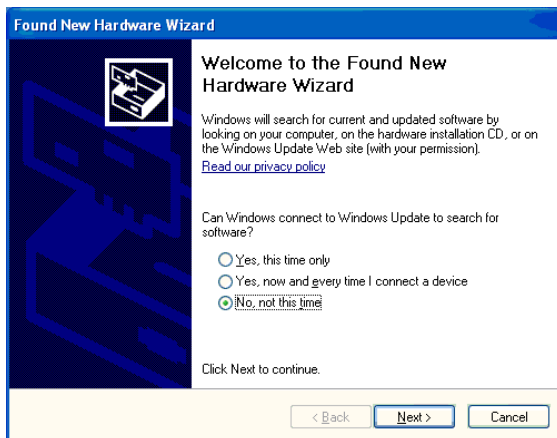
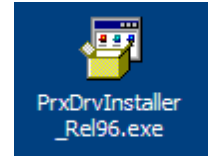
Thank you for your purchase of this Printrex product.

For easiest installation, please follow these basic instructions:

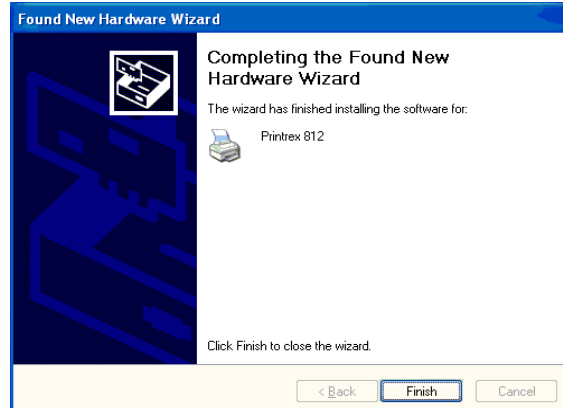
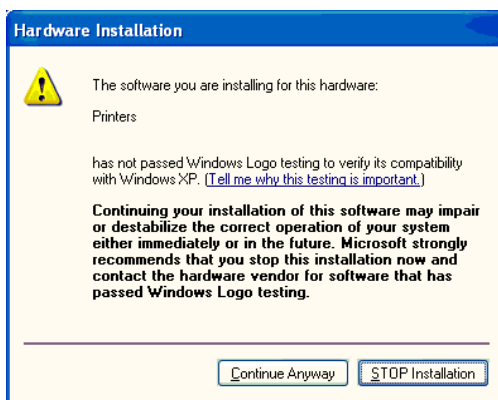
For more detailed instructions, including those for earlier products, please download the Windows Driver Installation Guide (p/n 1028-0061).

Windows XP:

1. For the latest drivers, please visit our website, <http://www.printrex.com>, and download the installer to your Desktop:
2. For best results, start with the printer **powered off**. Cancel any Windows installation wizards that start, *until* you've done the following step:
3. Double-click the installer, and run it to completion.
All Printrex drivers are now available to Windows for the next step, Plug-and-Play installation:
4. Connect the printer, and turn power on. The Found New Hardware wizard will start:
 - a) Skip the Windows Update search:



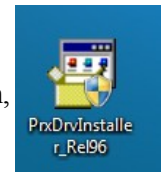
- b) On the second page of the wizard, select *Install the software automatically (Recommended)*:



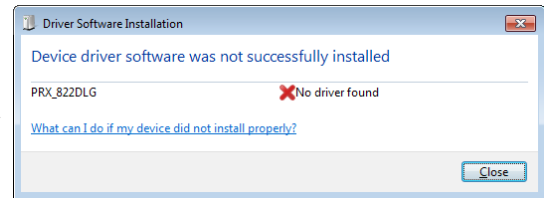
5. If you get a *Hardware Installation* warning dialog, click '*Continue Anyway*'
6. Finally, click *Finish*. The printer is now ready to use.

Windows 7:

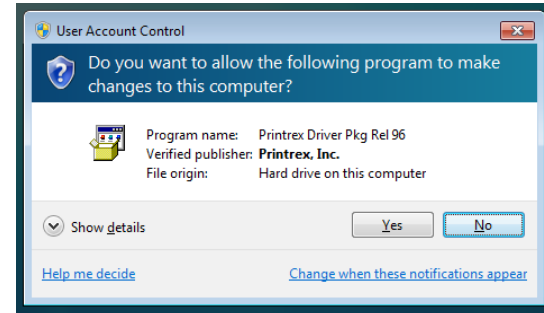
1. For the latest drivers, please visit our website, <http://www.printrex.com>, and download the installer to your Desktop:



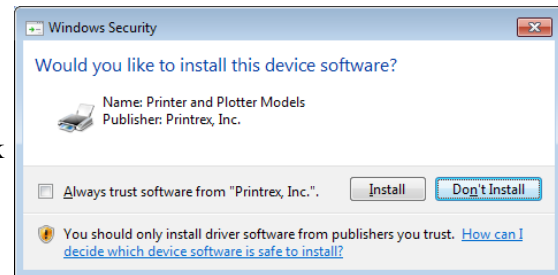
2. For best results, start with the printer powered off. (If the printer *was* on and connected, you may see a dialog like this one: Don't worry, just turn off the printer and proceed:)



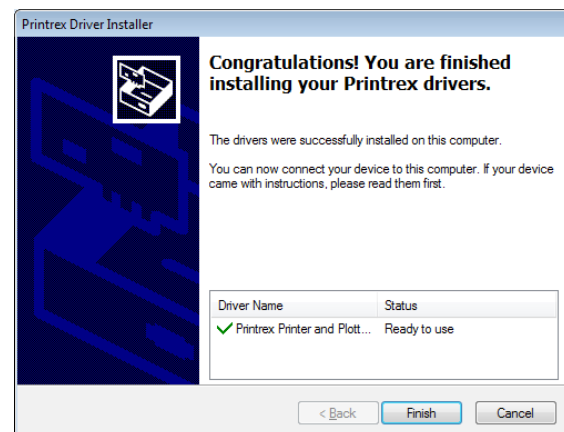
3. Double-click the installer to run it. You should see a User Account Control dialog like this one; reply 'Yes'. Proceed with the installer wizard.



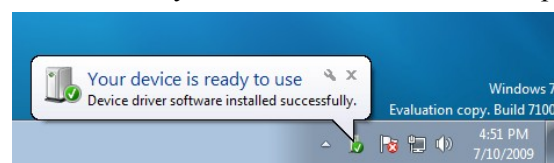
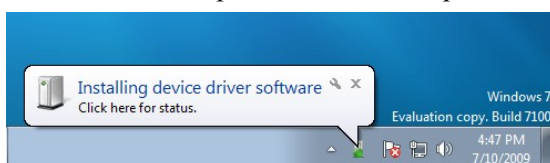
4. During the installation of files to the Driver Store, you may see another confirmation dialog like this one: Click 'Install'.



5. Once you have finished the Installer, you can connect **any** Printrex USB printer and the driver will install automatically, even if the printer icon is later deleted from the *Printers and Devices* folder.



6. Now, connect the printer and turn on power: You will see two Tray notifications, a few seconds apart:



...after the second notification, your printer is ready to use.