



# High Performance Thermal Printers/Plotters

## FOR MOBILE DATA SYSTEMS

### Rugged Reliability

Printrex products earned their reputation for rugged reliability during a decade of installations in hostile environments beginning with several hundred units in railroad locomotives in 1992. Printrex began supplying oil field data logging applications in 1993 and now supplies the most popular plotters for that application all around the world. Installations in commercial aircraft also began in 1993 and fire engine applications date from 1995. Experience with these applications has proven Printrex to be the right choice for printing in adverse environments.

### Operates Directly From Vehicle Power Source

Designed to meet the requirements of SAE J1455, Recommended Environmental Practices for Electronic Equipment Design (Heavy Duty Trucks), these printers operate directly from the vehicle power system. They can tolerate the wide voltage excursions typical of this application and are protected against reverse power connection.

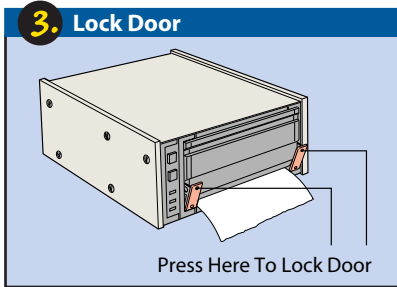
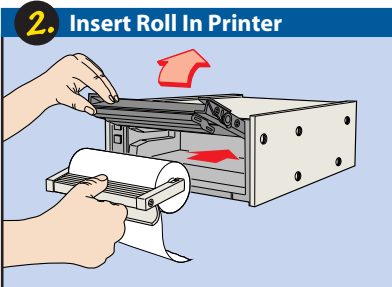
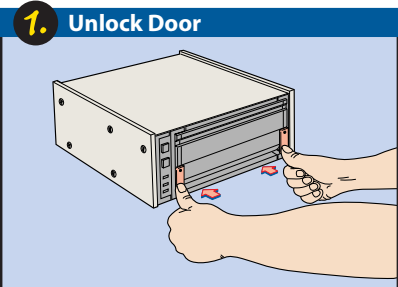


Printrex 810 M

### Regulatory

Printrex printers for mobile applications meet "e" mark specifications for vehicle installations in the EU and conform to VIDG 5 (Validation and Installation Design Group), the very stringent limits on electromag-

netic emissions and susceptibility established by the Home Office in the United Kingdom. Because of the need to operate in remote locations with very weak radio signals, the allowable emissions are even lower than permitted by FCC and CE regulations.



**Easy Paper Loading** Printrex printers/plotters feature an innovative paper handling system that permits the user to reload paper in seconds without any threading or alignment, even while wearing heavy gloves. The operator simply inserts the paper carrier, closes the door and is ready to print.

# Printrex Thermal Printers

## Installation Options

Printers are available in a variety of configurations and mounting options. Panel mount versions can be inserted into a cutout on the instrument panel. Other options include mounting brackets for attachment to a bulkhead or cased units to set on a shelf.

## Interface, Drivers and I/O Connections

The standard interface on the 810 is high speed parallel with RLE and Centronics compatibility. A serial adapter for RS 232 is available.

Please consult the Printrex web page for Drivers for Windows® platforms and I/O pin connections. The 422 has both serial and parallel interfaces as standard.

## Custom Configurations

Because a standard product does not fit every application, Printrex offers design services to match the characteristics of the product to the requirements of the application. It may be a modification to an existing product or a completely new printer design for an application where a suitable product does not exist.



*Printrex 810 MV with bracket for bulkhead mounting.*



*Printrex 422. Panel mount and cased units available.*



*Printrex 422 in a computerized metering system for fuel delivery.*



*Fire Brigade application in the United Kingdom.*

## Product Selection Matrix

Model	Paper Width		Maximum Print Width		Print Speed	
	Inches	mm	Inches	mm	inches/sec	mm/sec
422	4.3	110	4.1	104	2	50
810	8.5 / 8.75	216 / 222	8.5	216	1	25



Represented By:

276 East Gish Road (408) 573-1200 Voice  
San Jose, CA 95112 (408) 573-1600 Fax

[www.printrex.com](http://www.printrex.com)